

**NEW
Features!**



Introducing: BESTMIX® 3.27

Learn about some of the new capabilities in the latest version

Introducing BESTMIX®

BESTMIX® allows you to least-cost your products, taking into account all the quality requirements, factory specifications, health and safety requirements, and environmental and legal aspects of your business. The resulting optimum recipe is directly translated into a practical product and is synchronized with labelling data and safety data sheets when needed.

BESTMIX® enables you to easily manage nutritional values, production parameters, recipe specifications, available ingredient stocks, purchasing positions, material cost prices and other conditions. This means you can guarantee to deliver the best product for your customers, at the lowest cost, under any condition – and at any time.

BESTMIX® has been a major player in formulation solutions for feed-related industries for forty years now. We invest continually and significantly in R&D to develop, with our clients, the most useful solutions and services that not only make it easy for you to comply with emerging regulatory requirements and future market trends but also enable you to stay ahead of the competition.

bestmix® software
Profit-driven feed formulation

Overview of the new features in version 3.27

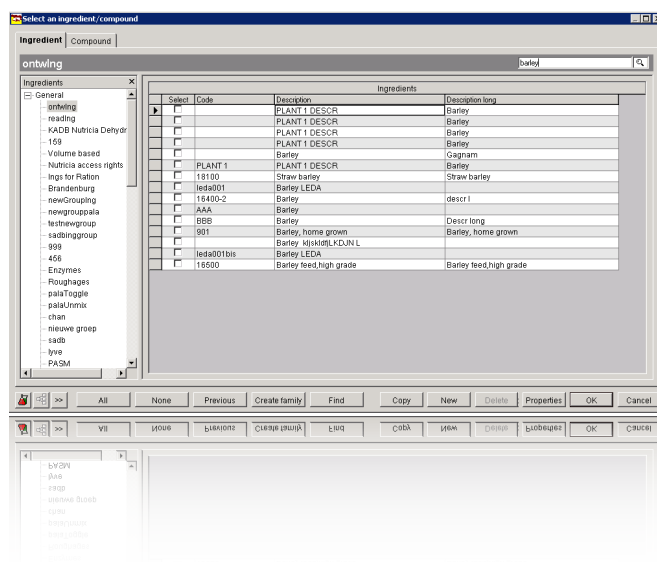
Adifo is constantly developing the BESTMIX® Software with the help of our consultants and users around the globe. This means we release 1 or 2 new versions on a yearly basis. We encourage users to renew their version on a regular basis, offering the following advantages:

- Work more efficiently thanks to constant developments
- Comply with recent legal requirements in the industry

Below is an overview of some of the most interesting new features in BESTMIX®

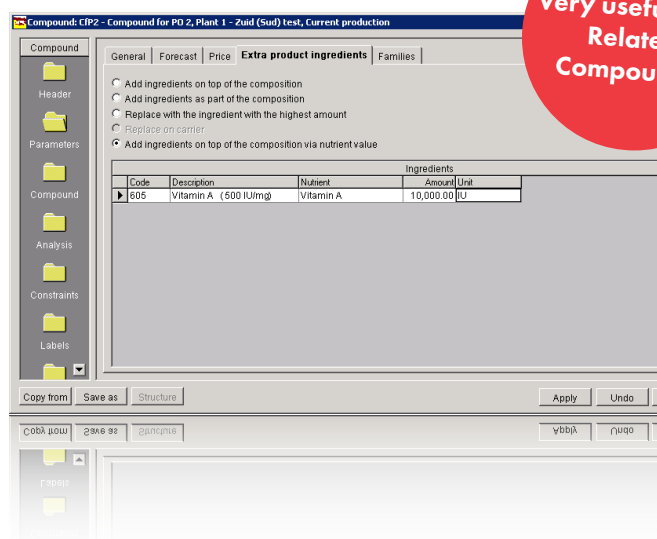
Quick search

To improve efficiency we have now included a search bar that enables you to quickly find that Raw material, Nutrient or Compound you were looking for.

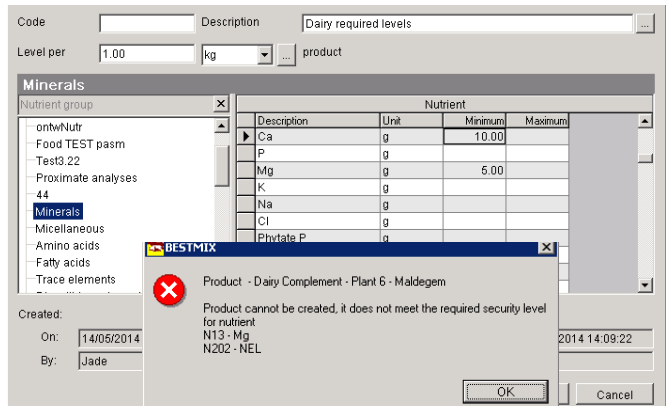


Extra ingredients via nutrient value

Determine the exact amount of additive to be added during the rounding, using specific nutrient values



Administrators can now manage the global settings and security from a centralized Management application.



Build animal-specific nutrient security models and prevent the creation of products that do not comply to preset requirements.

Security management is now available to administrators through the management application. This gives a clear overview of the security model in place and the ability to make modifications in the same screen.

[illegible]

Liquid and complement feed improvements

We have created an improved Ration User Experience by adding functionalities that allow:

- Quick switches to the limited nutrient values using the nutrient list toggle.
- Comparisons with the complete production composition.
- Quick selection of different nutrients before printing the Ration report.
- Management of the raw material prices per % dry matter within the Ration.

The screenshot shows the 'Nutrient selector' window with tabs for General, User specific, and Company specific. The 'Minerals' tab is active, displaying a list of nutrients with checkboxes for selection. A summary table at the bottom shows the composition of the ration.

Nutrient	Unit	Absolute	Minimum	Maximum
DM	g	1,035.225	800.00	1,100.00
Re	g	179.00	160.00	170.00
PC	%	17.931	16.00	18.00
Ca	g	9.979	6.00	10.00
K	g	9.716	1.40	2.00
Na	g	1.095	1.03	1.50
Energy Value P	g	1.50	1.50	1.50
dig P	g	1.826	800.00	800.00
Ca/P	g	2.53	1.80	5.00
Test m	Completed with 0.706 kg (72.311 %DM) Dayprice Febr '05	Price: 1.254 € (177.672 €/100 kg)	Evaporation: 10.00 %	23

Multilevel hierarchical window

Users can now manage multilevel recipes in the hierarchy window. They also have the opportunity to optimize the multilevel structure and modify constraints in one single screen.

The screenshot shows the 'Compound hierarchical structure' window, displaying a detailed view of the multilevel recipe structure. It includes a table with columns for Code, Description, Percentage, and Price.

Code	Description	Percentage	Price	Cost/Unit	Form	Id
85560	- Grass silage wilted, 400	16.00	54.50	12.00	1.95	
85420	- Grass silage, 200 N mat	12.00	15.00	12.00	0.008	57.50
ML Sub 1	- Multilevel Sub 1	12.00	12.00	10.817	0.098	54.50
1594	- Grass 200 N, cut beto	3.94	32.00	25.00	15.00	
ST081	- Grass 300 N, cut 1/07	3.72	31.00	2.00	5.00	4.958
NSP101	- Grass 200 N, cut after	2.89	24.00	25.00	0.00	10.00
ML Sub 2	- Multilevel Sub 2	11.00	11.00	11.00	3.75	
85410	- Grass silage, 200 N	11.00	100.00	0.00	3.75	
ML Sub	- Multilevel Sub 1	0.00	3.00	10.917		
1594	- Grass 200 N, cut b	0.00	32.00	25.00	15.00	
ST081	- Grass 300 N, cut 1	0.00	31.00	2.00	5.00	4.958
1592	- Grass 200 N, cut a	0.00	24.00	25.00	10.00	
ML Sub	- Mix Strawb. BMWS	0.00	13.00	0.00	16.00	
85530	- Grass silage wilted, 3	0.00	0.00	0.00	4.50	
85530	- Grass silage wilted, 300	7.50	7.50	7.50	0.033	50.00